

Remote connections to an Eclipse Tech virtual workstation can be established using the NICE DCV native MacOS client. Installing the DCV native client offers higher frame rates and better quality imagery than connections with the NICE DCV HTML5 client in a web browser.

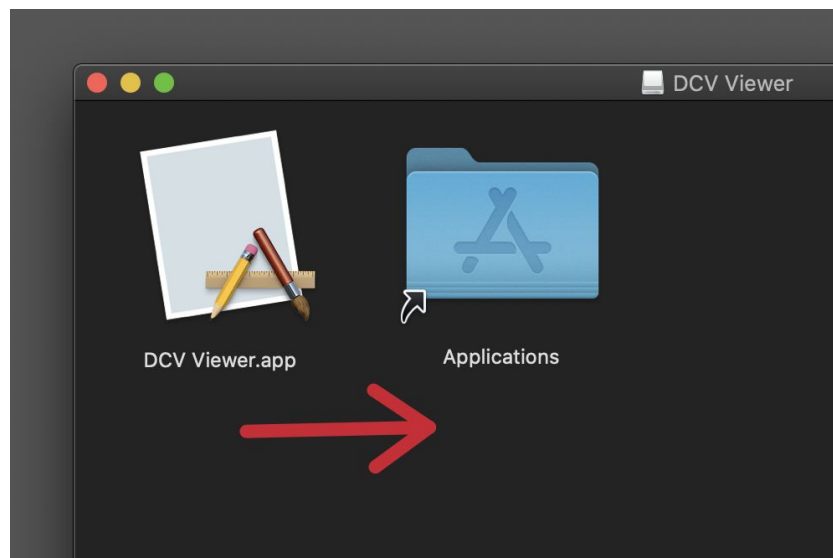
Steps for setting up and connecting:

1. Download the NICE DCV native client:

<https://download.nice-dcv.com/>

NOTE: Be sure to select the correct version for your operating system. In this example we will be using "MacOS (x86_64)".

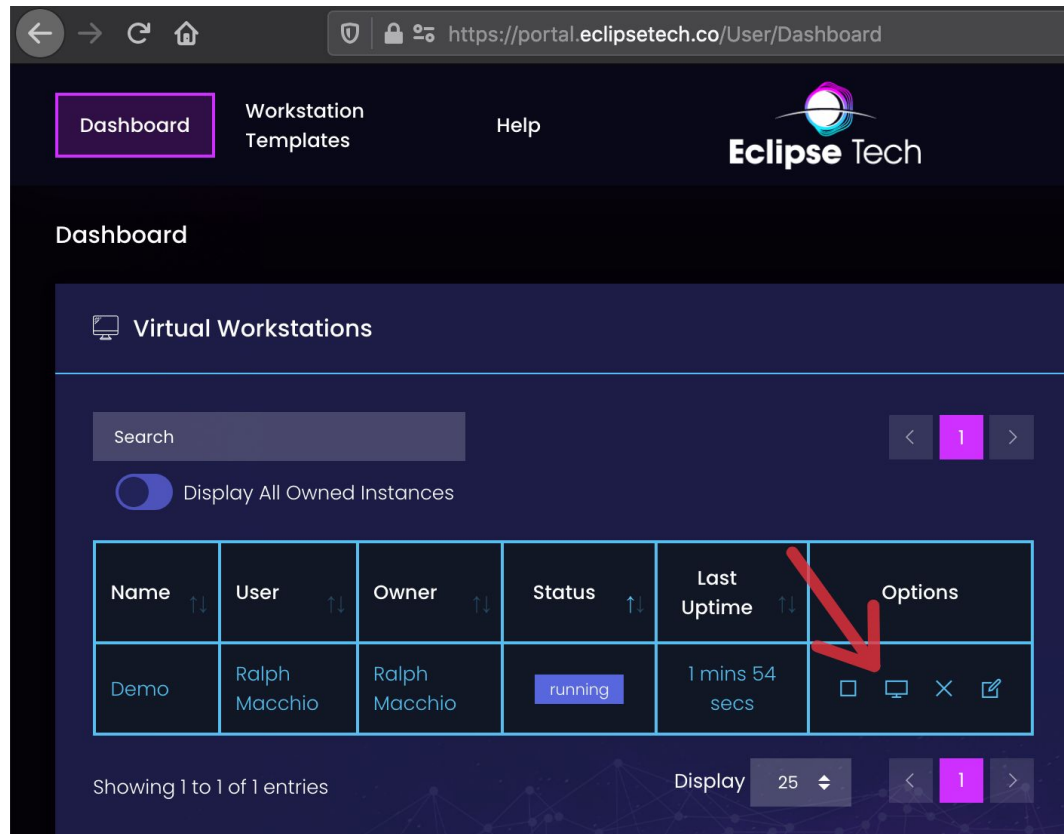
2. Begin the installation by double clicking the downloaded file **nice-dcv-viewer-2020.1.1910.dmg**.
3. To complete the installation, drag the "**DCV Viewer.app**" icon into the "**Applications**" folder.



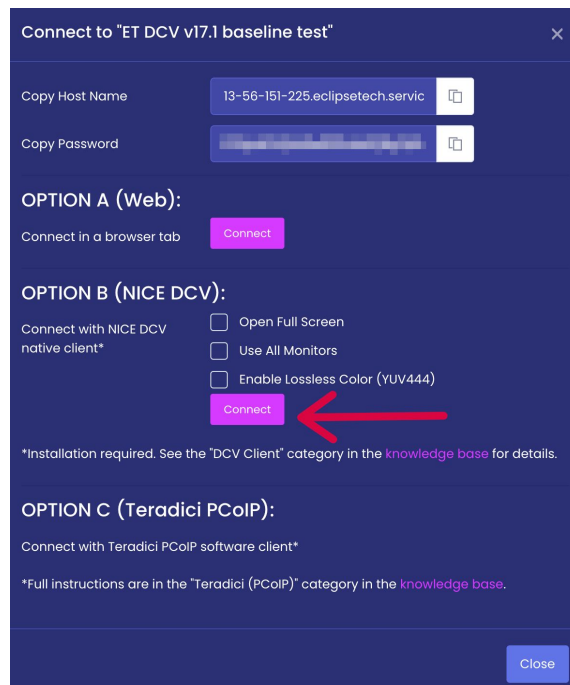
4. You are now ready to connect with the NICE DCV native client:
 - a. Log in to the Eclipse Tech web portal at: <https://portal.eclipsetech.co>
 - b. Start your virtual workstation.

Eclipse Tech™ Connect with NICE DCV Native Client (macOS)

c. Click the **“Connect”** icon.

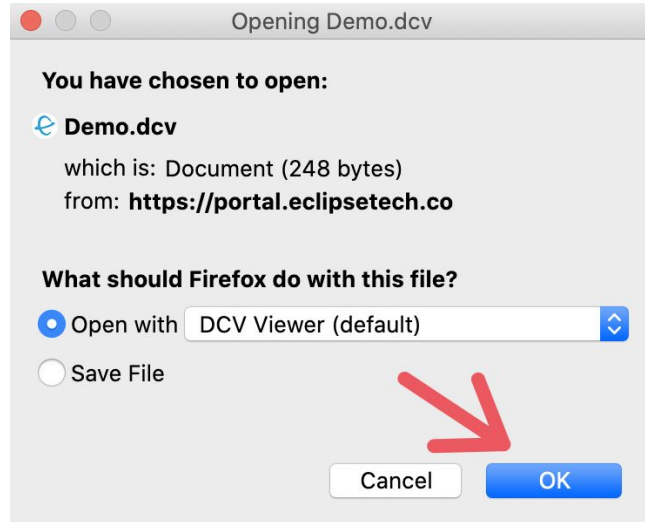


d. Click the **“Connect”** button to download the NICE DCV native client launch file.



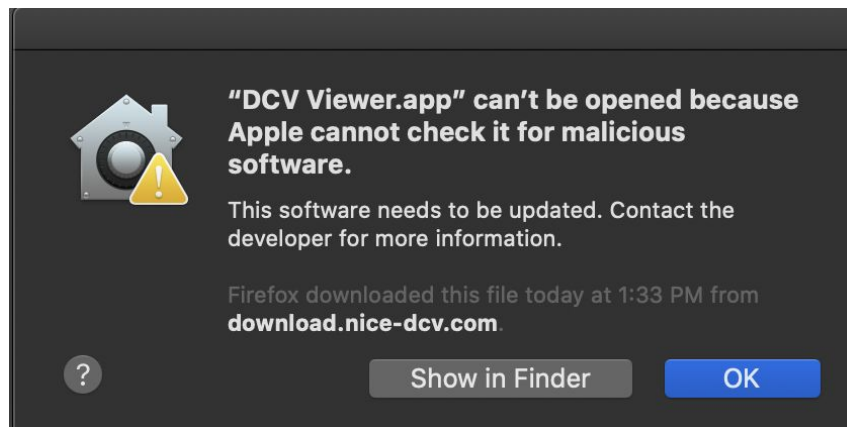
Connect with NICE DCV Native Client (macOS)

- e. When prompted about what to do with the file being downloaded, select “**Open with DCV Viewer (default)**” and click “**OK.**”

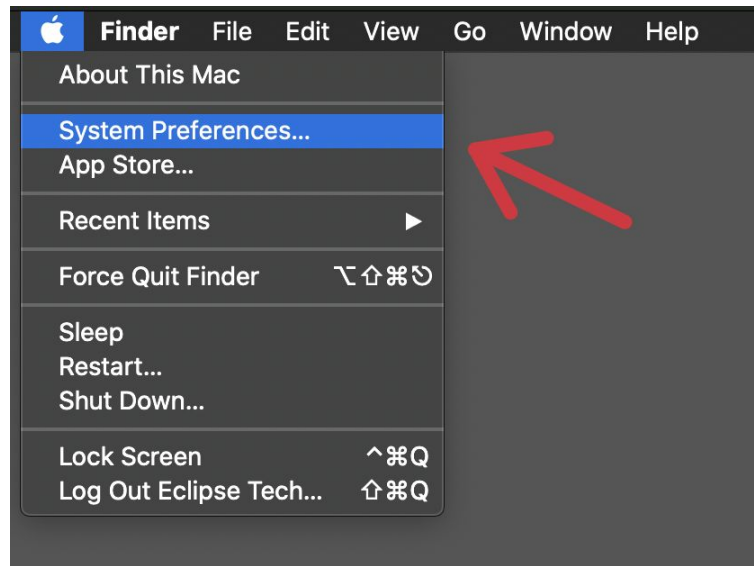


- f. If you encounter this dialog box when the “**DCV Viewer.app**” application launches, you will need to specifically allow this app in the security settings before it will be allowed to run. Click “**OK**” and proceed to the next step.

NOTE: If you **DO NOT** encounter this dialog box then skip to step **4.j** in this guide.



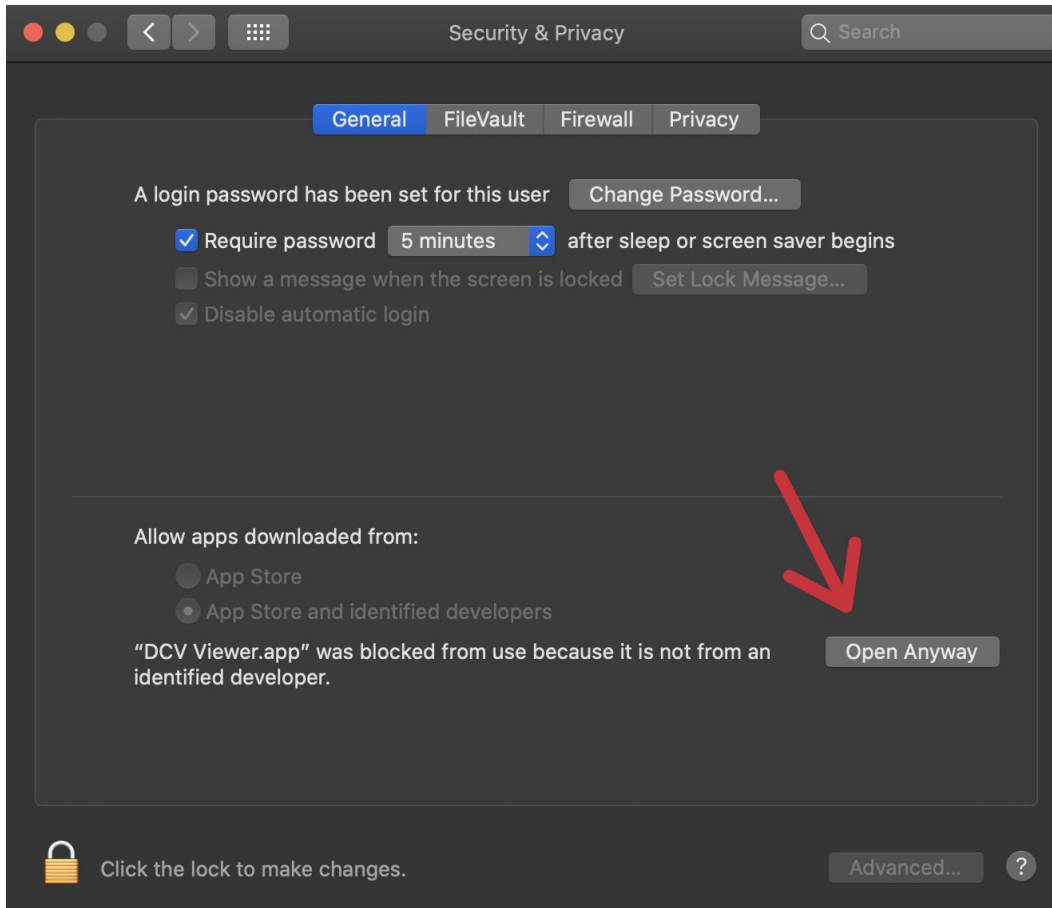
g. Open the “System Preferences...”



h. Open the “Security & Privacy” settings.

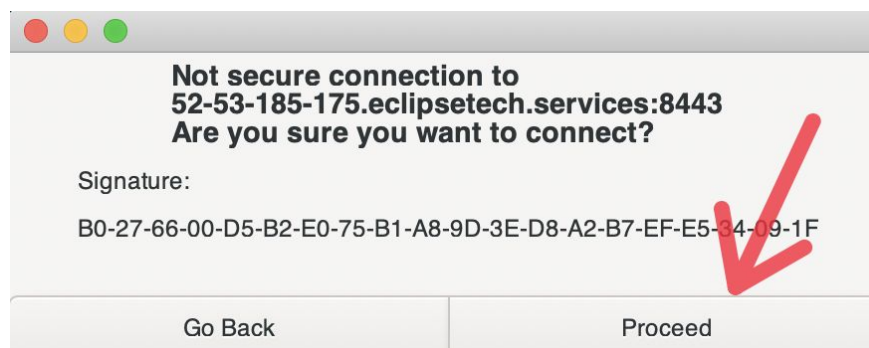


- i. Under the “**General**” tab click on the “**Open Anyway**” button.



NOTE: Close the system preferences and return to step 4.d in this guide.

- j. The NICE DCV native client should launch using the .dcv file that was downloaded. If this is the first time that you have connected to this virtual workstation since it was started, you will be presented with a question about the signature of this connection. Click “**Proceed**” to continue.



5. You should now be connected to your virtual workstation via the NICE DCV native client.

